

INSTRUCTOR'S SOLUTIONS MANUAL

REINFORCED  
CONCRETE  
A FUNDAMENTAL APPROACH  
SIXTH EDITION

EDWARD G. NAWY



Upper Saddle River, New Jersey 07458

**Vice President and Editorial Director, ECS:** Marcia J. Horton  
**Senior Editor:** Holly Stark  
**Associate Editor:** Dee Bernhard  
**Editorial Assistant:** Jennifer Lonschein/Alicia Lucci  
**Director of Team-Based Project Management:** Vince O'Brien  
**Senior Managing Editor:** Scott Disanno  
**Art Director:** Kenny Beck  
**Cover Designer:** Kristine Carney  
**Art Editor:** Greg Dulles  
**Manufacturing Manager:** Alan Fischer  
**Manufacturing Buyer:** Lisa McDowell

**About the Cover:** Shown is the Milwaukee Art Museum, Milwaukee, Wisconsin. Construction in reinforced and prestressed concrete in various shapes that include cantilevered canopies and a unique cable-stayed bridge. Rows of exposed situ-cast concrete arches form a galleria that overlooks Lake Michigan. Designed by Architect Santiago Calatrava and opened in 2002. Photo courtesy Professor Tarun Naik, University of Wisconsin at Milwaukee.

The author and publisher of this book have used their best efforts in preparing this book. These efforts include the development, research, and testing of the theories and programs to determine their effectiveness. The author and publisher make no warranty of any kind, expressed or implied, with regard to these programs or the documentation contained in this book. The author and publisher shall not be liable in any event for incidental or consequential damages in connection with, or arising out of, the furnishing, performance, or use of these programs.

---

**Copyright © 2009 by Pearson Education, Inc., Upper Saddle River, New Jersey 07458.**

All rights reserved. Printed in the United States of America. This publication is protected by Copyright and permission should be obtained from the publisher prior to any prohibited reproduction, storage in a retrieval system, or transmission in any form or by any means, electronic, mechanical, photocopying, recording, or likewise. For information regarding permission(s), write to: Rights and Permissions Department.

Pearson Education Ltd., London  
Pearson Education Singapore, Pte. Ltd.  
Pearson Education Canada, Inc.  
Pearson Education–Japan  
Pearson Education Australia PTY, Limited  
Pearson Education North Asia, Ltd., Hong Kong  
Pearson Educación de Mexico, S.A. de C.V.  
Pearson Education Malaysia, Pte. Ltd.  
Pearson Education, Upper Saddle River, New Jersey



10 9 8 7 6 5 4 3 2 1

ISBN-13: 978-0-13-241702-0  
ISBN-10: 0-13-241702-2

## ACKNOWLEDGEMENT

Grateful acknowledgement to Professor Mayrai Gindy, Ph.D. Rutgers University, for her extensive work developing the solutions to most of the problems in this Solutions Manual while she was completing her doctoral work at Rutgers and to Professor Nakin Suksawang for review of the updated version.



# CONTENTS

Please note that there are no solutions for Chapters 1 through 4. Solutions begin with Chapter 5.

Chapter 5	Flexure in Beams, 1–40
Chapter 6	Shear and Diagonal Tension in Beams, 41–89
Chapter 7	Torsion, 90–120
Chapter 8	Serviceability of Beams and One-Way Slabs, 121–154
Chapter 9	Combined Compression and Bending: Columns, 155–220
Chapter 10	Bond Development of Reinforcing Bars, 221–237
Chapter 11	Design of Two-Way Slabs and Plates, 238–281
Chapter 12	Footings, 282–301
Chapter 13	Continuous Reinforced Concrete Structures, 302–334
Chapter 14	Introduction to Prestressed Concrete, 335–353
Chapter 15	LRFD AASHTO Design of Concrete Bridge Structures, 354–392
Chapter 16	Seismic Design of Concrete Structures, 393–422
Chapter 17	Strength Design of Masonry Structures, 423–448



5.1. For the beam cross-section shown in Fig. 5.33 determine whether the failure of the beam will be initiated by crushing of concrete or yielding of steel. Given:

$$f'_c = 4000 \text{ psi (27.6 MPa) for case (a), } A_s = 10 \text{ in.}^2$$

$$f'_c = 7000 \text{ psi (48.3 MPa) for case (b), } A_s = 5 \text{ in.}^2$$

$$f_y = 60,000 \text{ psi (414 MPa)}$$

Also determine whether the section satisfies ACI Code requirements.

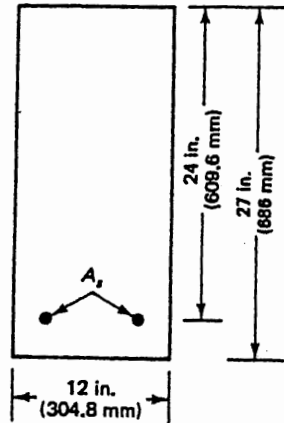


Figure 5.33

Solution:

a)  $\beta_1 = 0.85$   
 $A_s = 10 \text{ in.}^2$   
 $f_y = 60,000 \text{ psi}$   
 $f'_c = 4,000 \text{ psi}$

$$a = \frac{A_s f_y}{0.85 f'_c b} = \frac{(10)(60,000)}{0.85(4,000)(12)} = 14.71 \text{ inches}$$

$$c = \frac{a}{\beta_1} = \frac{14.71}{0.85} = 17.31 \text{ inches}$$

$$\frac{c}{d_t} = \frac{17.31}{24} = 0.72 > 0.60$$

$\therefore$  Compression-controlled  
 and concrete crushes before tension  
 steel yields

$$b) \beta_1 = 0.85 - 0.05 \left( \frac{7,000 - 4,000}{1,000} \right) = 0.70$$

$$f'_c = 7,000 \text{ psi}$$

$$A_s = 5 \text{ in}^2$$

$$a = \frac{A_s f_y}{0.85 f'_c b} = \frac{(5)(60,000)}{0.85(7,000)(12)} = 4.20 \text{ inches}$$

$$c = \frac{a}{\beta_1} = \frac{4.2}{0.70} = 6.0 \text{ inches}$$

$$\frac{c}{d_t} = \frac{6}{24} = 0.25 < 0.375 \quad \therefore \text{Tension-controlled and steel yields before concrete crushes}$$

$$\rho = \frac{A_s}{bd} = \frac{5}{(12)(24)} = 0.017 \text{ in/in.}$$

$$\rho_{\min} = \max \left\{ \frac{3\sqrt{7,000}}{60,000} = 0.0042, \frac{200}{60,000} = 0.0033 \right\} = 0.0042 \text{ in/in.}$$

$$0.017 > 0.0042 \quad \therefore \underline{0.2} \text{ satisfies ACI CODE}$$



5.2. Calculate the nominal moment strength of the beam sections shown in Fig. 5.34. Given:

$$f'_c = 5000 \text{ psi (20.7 MPa) for case (a)}$$

$$f'_c = 6000 \text{ psi (41.4 MPa) for case (b)}$$

$$f_y = 60,000 \text{ psi (414 MPa)}$$

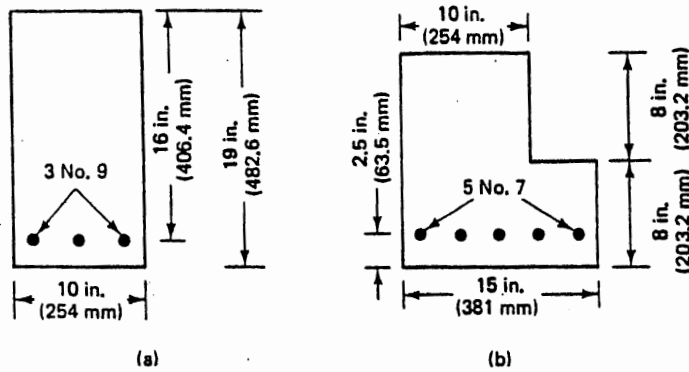


Figure 5.34

Solution:

a)  $f'_c = 5,000 \text{ psi}$

$$\beta_1 = 0.80$$

$$A_s = 3 \times 100.9 = 310.9 \text{ in}^2$$

$$b = 10 \text{ in.}$$

$$a = \frac{A_s f_y}{0.85 f'_c b} = \frac{(3)(60,000)}{0.85(5,000)(10)} = 4.24 \text{ inches}$$

$$c = \frac{a}{\beta_1} = \frac{4.24}{0.80} = 5.29 \text{ in.}$$

$$\frac{c}{d_t} = \frac{5.29}{16} = 0.33 < 0.375 \quad \therefore \text{Tension-Controlled}$$

$$\phi = 0.90$$

$$\rho = \frac{A_s}{bd} = \frac{3}{(10)(16)} = 0.019$$

$$\rho_{\min} = \max \left\{ \frac{3\sqrt{f'_c}}{f_y}, \frac{200}{f_y} \right\} = 0.0035 < 0.019 \quad \underline{\underline{\text{O.K.}}}$$

$$M_n = A_s f_y (d - a/2) = (3)(60,000) \left( 16 - \frac{4.24}{2} \right) = 2,498,824 \text{ in-lb}$$

$$M_u = \phi M_n = 0.90 (2,498,824) = 2,248,941 \text{ in-lb.}$$

b)  $f'_c = 6,000 \text{ psi}$

$$\beta_1 = 0.75$$

$$A_s = 510.7 = 3 \text{ in}^2$$

$$b = 10 \text{ in (assuming neutral axis is 8 in top 8 inches)}$$

$$a = \frac{A_s f_y}{0.85 f'_c b} = \frac{(3)(60,000)}{0.85(6,000)(10)} = 3.53 \text{ in.}$$

$$c = a/\beta_1 = 4.71 \text{ in} < 8 \text{ in.} \quad \therefore b = 10 \text{ in.} \quad \underline{\underline{\text{O.K.}}}$$

$$\frac{c}{d_t} = \frac{4.71}{13.5} = 0.35 < 0.375 \quad \therefore \text{Tension-controlled} \quad \phi = 0.90$$

$$\rho = \frac{A_s}{bd} = 0.022 \quad \rho_{\min} = \max \left\{ \frac{3\sqrt{f'_c}}{f_y}, \frac{200}{f_y} \right\} = 0.0039 < 0.022 \quad \underline{\underline{\text{O.K.}}}$$

$$M_n = A_s f_y (d - a/2) = (3)(60,000) \left( 13.5 - \frac{3.53}{2} \right) = 2,112,353 \text{ in-lb}$$

$$M_u = \phi M_n = 0.9 M_n = 1,901,118 \text{ in-lb.}$$

5.3. Calculate the safe distributed load intensity that the beam shown in Fig. 5.35 can carry. Given:

$$f'_c = 4000 \text{ psi (27.6 MPa), normal-weight concrete}$$

$$f_y = 60,000 \text{ psi (414 MPa)}$$

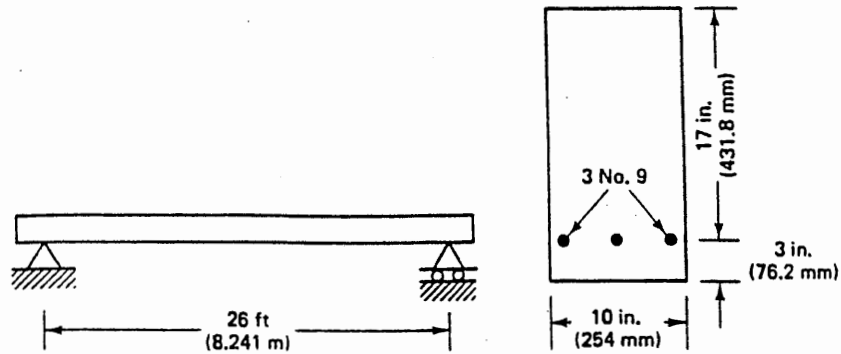


Figure 5.35

Solution:

Given

$$b = 10 \text{ in.}$$

$$f'_c = 4,000 \text{ psi}$$

$$h = 20 \text{ in.}$$

$$f_y = 60,000 \text{ psi}$$

$$d_t = 17 \text{ in.}$$

$$\beta_1 = 0.85$$

$$A_s = 3 \times 0.9 = 3.0 \text{ in}^2$$

$$a = \frac{A_s f_y}{0.85 f'_c b} = \frac{(3)(60,000)}{(0.85)(4000)(10)} = 5.29 \text{ in.}$$

$$c = \frac{a}{\beta_1} = \frac{5.29}{0.85} = 6.23 \text{ in.}$$

$$\frac{c}{d_t} = \frac{6.23}{17} = 0.37 < 0.375 \quad \therefore \text{Tension-controlled} \quad \phi = 0.90$$

$$\rho = \frac{A_s}{bd} = \frac{(3)}{(10)(17)} = 0.018$$

$$\rho_{\min} = \max \left\{ \frac{3\sqrt{f'_c}}{f_y}, \frac{200}{f_y} \right\} = 0.0033 < 0.018$$

$\therefore$  Satisfies ACI CODE Requirement

$$M_n = A_s f_y (d - a/2) = (3)(60,000) \left(17 - \frac{5.29}{2}\right) = 2,583,529 \text{ in.-lb.}$$

$$\phi M_n = (0.9)(2,583,529) = 2,325,176 \text{ in.-lb.}$$

maximum applied moment

$$M_u = \frac{w_u l^2}{8} = 2,325,176 \text{ in.-lb}$$

$$w_u = \frac{(2,325,176)(8)}{(28 * 12)^2} = 191.1 \text{ lb/in} = 2293 \text{ lb/ft.}$$

$$w_u = 1.2 \text{ DL} + 1.6 \text{ LL}$$

$$\text{DL} = \frac{(150 \text{ lb/ft}^3)(10 * 20)}{144} = 208.3 \text{ lb/ft.}$$

∴

$$2293 = 1.2(208.3) + 1.6 \text{ LL} \quad \Rightarrow \quad \text{LL} = 1277 \text{ lb/ft.}$$

5.4. Design a one-way slab to carry a live load of 100 psf and an external dead load of 50 psf. The slab is simply supported over a span of 12 ft. Given:

$$f'_c = 4000 \text{ psi (27.6 MPa), normal-weight concrete}$$

$$f_y = 60,000 \text{ psi (414 MPa)}$$

Solution:

Design as a 1 ft. wide singly reinforced section.

$$\text{Try, } \min h = \frac{L}{20} = \frac{(12)(12)}{20} = 7.2 \text{ in.}$$

$$\text{Try } h = 8 \text{ in.}, d_e = 7 \text{ in.}; b = 12 \text{ in.}$$

$$\text{Self-weight} = (150) \frac{(8)(12)}{144} = 100 \text{ lb/ft.}$$

$$DL = (50 \frac{\text{lb}}{\text{ft}^2})(1 \text{ ft}) = 50 \text{ lb/ft}$$

$$LL = (100 \frac{\text{lb}}{\text{ft}^2})(1 \text{ ft}) = 100 \text{ lb/ft.}$$

$$\therefore w_u = 1.2(100 + 50) + 1.6(100) = 340 \text{ lb/ft.}$$

$$M_u = \frac{w_u l^2}{8} = \frac{(340 \text{ lb/ft})(12 \text{ ft})^2}{8} = 6,120 \text{ ft-lb} = 73,440 \text{ in.-lb.}$$

Required nominal moment strength:

$$M_n = \frac{73,440}{0.90} = 81,600 \text{ in.-lb.}$$

$$\text{Assume } (d - a/2) \approx 0.9d = 0.9(7) = 6.3 \text{ in.}$$

$$M_n = A_s f_y (d - a/2)$$

$$81,600 = A_s (60,000)(6.3)$$

$$A_s = 0.22 \text{ in}^2 / 12\text{-in strip}$$

$$P_{\min} = \max \left\{ \frac{3\sqrt{f'_c}}{f_y}, \frac{200}{f_y} \right\} = 0.0033 \quad \therefore \min A_s = (0.0033)(12)(7) = 0.27 \text{ in}^2 / 12\text{-in strip}$$

$$\therefore \text{try } A_s = 0.28 \text{ in}^2 / 12\text{-in strip} \quad (\#4 \text{ bars at } 8.5 \text{ in c-c})$$

$$a = \frac{A_s f_y}{0.85 f'_c b} = \frac{(0.28)(60,000)}{0.85(4,000)(12)} = 0.41 \text{ in.}$$

$$c = \frac{a}{\beta_1} = \frac{0.41}{0.85} = 0.48 \text{ in.}$$

$$\frac{c}{d_t} = \frac{0.48}{7} = 0.069 < 0.375 \quad \therefore \text{Tension-controlled} \quad \phi = 0.90$$

Actual nominal moment strength.

$$M_n = A_s f_y (d - a/2) = (0.28)(60,000) \left( 7 - \frac{0.41}{2} \right) = 114,156 \text{ in-lb}$$

$$114,156 \text{ in-lb} > \text{Req'd } 81,600 \text{ in-lb} \quad \underline{\text{O.K.}}$$

Shrinkage and Temperature Reinforcement:

$$\text{Req'd steel area} = 0.0018(12)(8) = 0.17 \text{ in}^2 / 12\text{-in strip}$$

$$\text{maximum spacing} = \min \{ 5(8) = 40 \text{ in}, 18 \text{ in} \} = 18 \text{ in.}$$

$$\therefore \text{use } \#4 \text{ bar @ } 14 \text{ in. c-c} \quad (A_s = 0.17 \text{ in}^2 / 12\text{-in strip})$$

5.5. Design the simply supported beams shown in Fig. 5.36 as rectangular sections. Given:

$$f'_c = 5000 \text{ psi (34.5 MPa), normal-weight concrete}$$

$$f_y = 60,000 \text{ psi (414 MPa)}$$

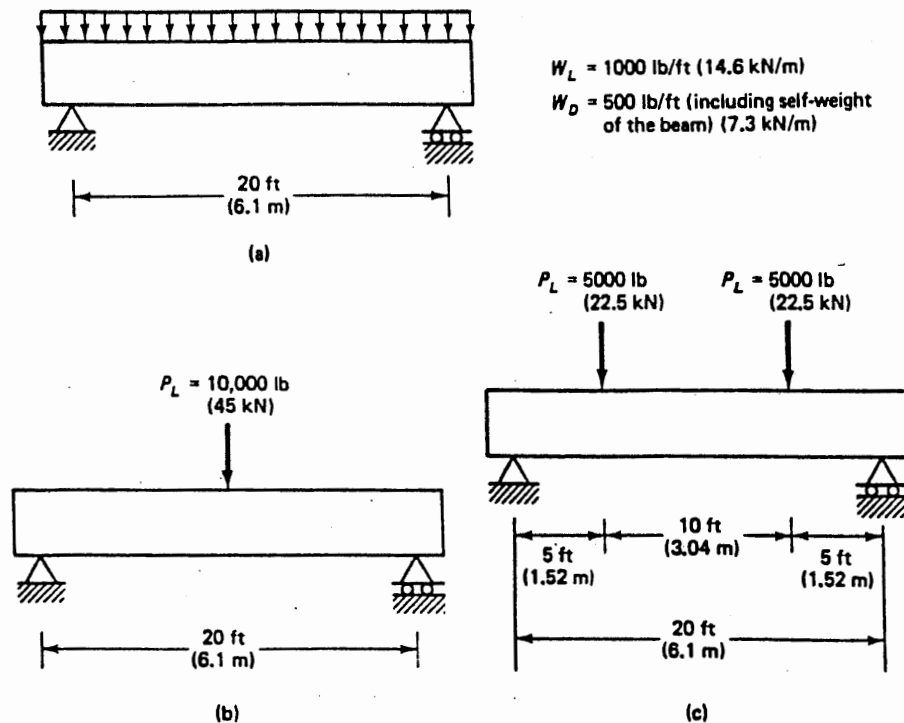


Figure 5.36

Solution:

$$a) \quad w_u = 1.2DL + 1.6LL = 1.2(500) + 1.6(1,000) = 2200 \text{ lb/ft.}$$

$$M_u = \frac{w_u l^2}{8} = \frac{(2200)(20)^2}{8} \times 12 = 1,320,000 \text{ in-lb}$$

Required nominal moment strength:

$$M_n = \frac{1,320,000}{0.90} = 1,466,667 \text{ in-lb}$$