

CHAPTER 2

1. Step 1: Find the real range. Step 2: Find the interval width. Step 3: Construct the frequency distribution.
2. Grouped data are distributed in intervals; ungrouped data are not.
3. (a) No. (b) Yes.
4. To ensure that a single score cannot be counted in more than one interval.
5. A percentile rank.
6. Ungrouped data sets with only a few different scores, and qualitative or categorical variables.
7. Rule 1: A vertical rectangle represents each interval, and the height of the rectangle equals the frequency recorded for each interval. Rule 2: The base of each rectangle begins and ends at the upper and lower boundaries of each interval. Rule 3: Each rectangle touches adjacent rectangles at the boundaries of each interval.
8. Midpoint; Upper boundary.
9. When the data are discrete. Histograms are only used with continuous data.
10. Discrete/categorical data.
11. (a)

Intervals	$f(x)$
18–22	5
13–17	3
8–12	7
3–7	5

(b) Interval: 8–12.

12. (a)

Classes	$f(x)$
L	9
C	16
R	5

(b) Yes, the rat did press the center lever the most.

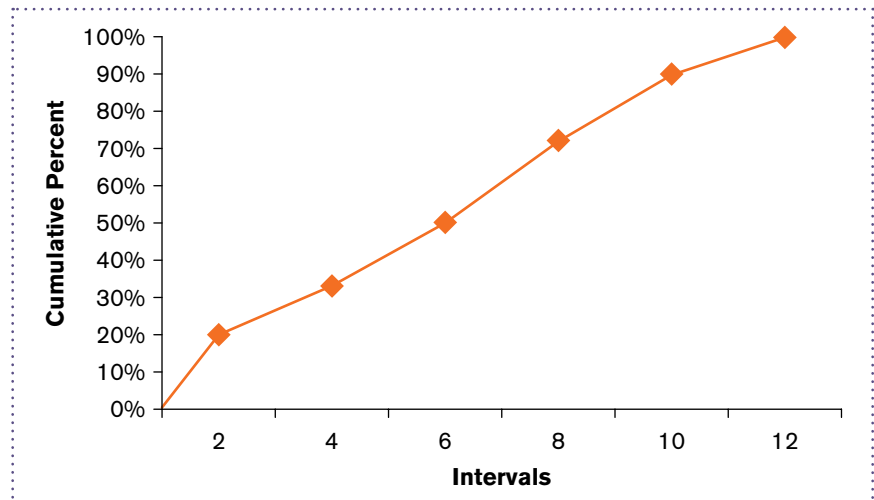
13. The intervals overlap at the upper and lower boundaries, which might lead to some scores being counted in more than one interval.
14. Three errors are (1) the intervals overlap, (2) the class width for each interval is not equal, and (3) the distribution includes an open interval.

15. The lower boundaries are 35, 46, 57, and 68.
16. The upper boundaries are 3, 6, 9, 12, 15, and 18.
17. No, the data should remain ungrouped because the data are categorical.
18. The interval width for each interval is 3.
19. (a)

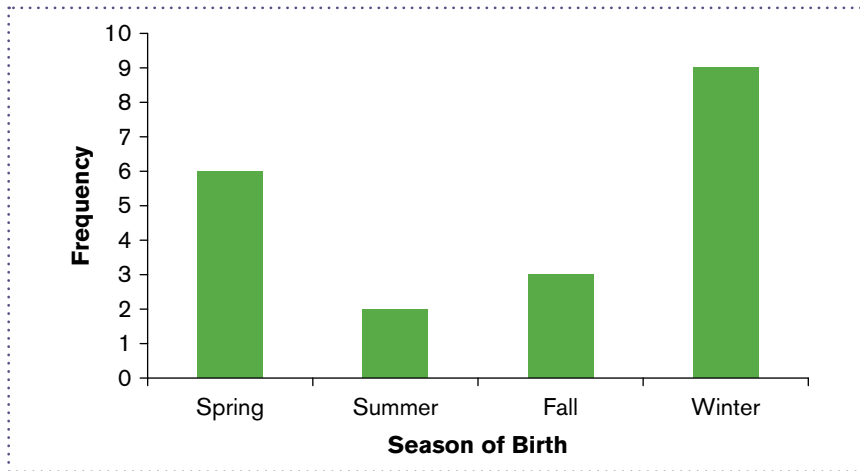
Number of Dreams	Percentile Rank
4	100%
3	88%
2	60%
1	24%
0	10%

(b) Two Dreams

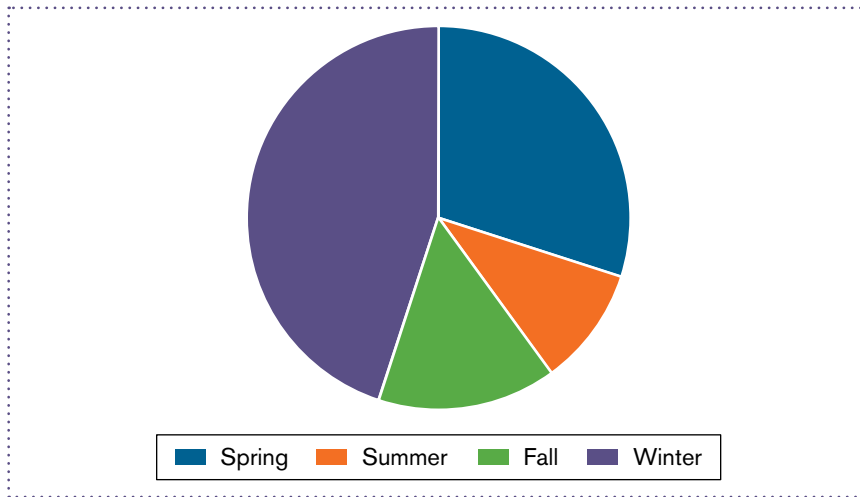
20. Sixty children qualify for the new cognitive-behavioral therapy.
21. (a) A bar chart or pie chart if distributing the letter grades along the x -axis. A histogram or frequency polygon if distributing the numeric values on a 4.0 grading scale. (b) A bar chart or pie chart. (c) A bar chart or pie chart distributing the frequencies for each behavioral therapy. (d) A histogram or frequency polygon.
22. (a) Histogram. (b) Bar chart. (c) Histogram. (d) Bar chart.
23. $A = 8, B = 3, C = 12$
24. (a) $A = 78, B = 86, C = 68, D = 13$. (b) Yes, this was a difficult test because half the class would fail.
25. (a) 35 students. (b) 6 students. (c) 15 students.
- 26.



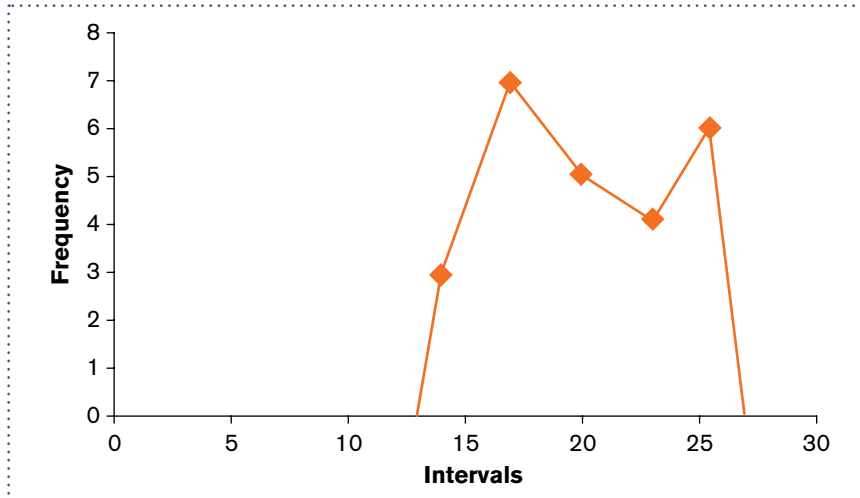
27. (a)



(b)



28.



29. The interval of 60–79 has the largest portion of students (20% of students fall in this interval).
30. The percentile point for the 50th percentile is 74.5 minutes.
31. (a) Real range = 56. (b) 30%.
32. (a) While more men earned a bachelor's degree in psychology in 1970–1971, women earn more than three times the number of bachelor's degrees in psychology as of 2005–2006. (b) Ungrouped data, because years are not distributed consecutively.
33. (a) A relative percent distribution. (b) About 576 Americans.

CHAPTER 3

1. (a) N . (b) n . (c) μ . (d) M or \bar{X} .
2. Measures of central tendency are statistical measures used to locate a single score that is most representative or descriptive of all scores in a distribution.
3. The median is the score in the middle of a distribution. It is always at the center of a distribution.
4. A population mean is the mean for a set of scores in an entire population, whereas the sample mean is the mean for a sample, or subset of scores from a population.
5. Five characteristics of the mean are as follows: (1) Changing an existing score will change the mean; (2) adding a new score or completely removing an existing score will change the mean, unless that value equals the mean; (3) adding, subtracting, multiplying, or dividing each score in a distribution by a constant will cause the mean to change by that constant; (4) the sum of the differences of scores from their mean is zero; and (5) the sum of the squared differences of scores from their mean is minimal.
6. The weighted mean equals the arithmetic mean when the sample sizes or “weights” for a set of scores are the same or equal.
7. Data that are normally distributed on an interval or ratio scale of measurement.
8. Data that are skewed and ordinal data.
9. The mode is used with other measures of central tendency for any modal distribution and for nominal data.
10. (a) Median. (b) Mean. (c) Mean.
11. Mean = 4, median = 2, mode = 0.
12. (a) College students: mean = 25, median = 18, mode = 21. Parents: mean = 14, median = 18, mode = 21. (b) Because both distributions are skewed, the median would be the appropriate measure of central tendency. This might be misleading, though, because the median indicates that texting was the same between groups (the median was 18 in both samples), even though differences exist in regard to the mean.

SPSS IN FOCUS: FREQUENCY DISTRIBUTIONS FOR QUANTITATIVE DATA

Exercise 2.1 Answer Key

With regard to the SPSS exercise, answer the following questions:

State the dependent variable: Number of absences

State the following values (you can find these in the SPSS output table):

Total number of scores entered	<u>100</u>
The score at the 50th percentile	<u>5</u>
The frequency at or above the 80th percentile	<u>22</u>
The frequency at or below the 80th percentile	<u>80</u>

Explain why the frequencies at or above and at or below the 80th percentile do not sum to 100.

The frequencies at or above and at or below the 80th percentile do not sum to the total number of scores entered ($N = 100$), because the frequency at the 80th percentile (2) is counted in both percentile ranges.

Remember that a main goal for using frequency distributions is to simplify large data sets, which makes it easier to interpret research data. That being said, how would you characterize or interpret the data displayed in the SPSS output table you created?

The data indicate that half the students at this school were absent from school 5 or fewer times in a given school year, and one-fourth missed 0 or 1 day of school (25 out of 100 students missed only 0 or 1 day of school).

SPSS IN FOCUS: FREQUENCY DISTRIBUTIONS FOR CATEGORICAL DATA

Exercise 2.2 Answer Key

With regard to the SPSS exercise, answer the following questions:

Answer each of the following questions about coding data in SPSS.

Are categories displayed as numbers or words in data view? Numbers

Are categories displayed as numbers or words in the SPSS output table? Words

State the dependent variable: Texting efficiency (Always, Sometimes, Never)

State the following values (you can find these in the SPSS output table):

Total number of scores entered	<u>45</u>
The number of categories	<u>3</u>
The category in the 50th percentile	<u>N</u>

Remember that a main goal for using frequency distributions is to simplify large data sets, which makes it easier to interpret research data. That being said, how would you characterize or interpret the data displayed in the SPSS output table you created?

The largest frequency of texting in class was among those who never (N) looked at the keys. So those who efficiently text, were more often observed texting during class.

SPSS IN FOCUS: HISTOGRAMS, BAR CHARTS, AND PIE CHARTS

Exercise 2.3 Answer Key

With regard to the SPSS exercise, answer the following questions:

For the histogram, state the:

Dependent variable	<u>Amount of calories per meal</u>
Scale of measurement of the dependent variable	<u>Ratio</u>

For the bar chart and pie chart, state the:

Dependent variable	<u>Frequency in each health category</u>
Scale of measurement of the dependent variable	<u>Ratio</u>

Remember that a main goal for using graphs is to simplify large data sets. This goal makes it easier to interpret research data. That being said, how would you characterize or interpret the data displayed in the SPSS output graphs you created?

Most meals (as measured by number of calories) were unhealthy. This is evident both in terms of the number of calories (shown in the histogram) and the frequency of meals in each health category (shown in the bar chart and pie chart).

For your own reference, state which display is easiest for you to read. Please pick only one. There is no right or wrong answer here. It is simply worth recognizing the type of graphical display that makes the most sense to you.

SUGGESTION FOR USING THIS QUESTION IN CLASS: You can record responses of students for this question and distribute it in a frequency distribution for categorical data, and then create a bar chart from it. When you show students the results in class, this often leads to rather interesting conversation and opinions with regards to the “best” way for displaying data. So this little exercise can reinforce previous lectures, as well as gauge student interest. This is something to consider for your classes if you find the time. This exercise typically requires about 10 to 15 minutes of class time; maybe more time when student participation is high.

Chapter 2

M I X L Y X U A W **Q** Z C A N U P Y B Z L Q I M E E M P U Q K S C E J M
N **Q** U I L I E R S C P R O **I** H D V L I M Y C X Z Y **P** U S E D K N V A **F**
N E G I T V O O S X V E R J **N** J E L F O Z G B D V Z I U A C A O **P** L B
Q V Q **Q** U I U A V **U** H P **N** M K I R C **I** N I E B V A L R E C F B L E L E
R K Z W **U** N B S A L P M E **Q** J F E O **B** L C O C A R B H O **Q** V K R B K Q
L I C R D **M** B O X L Y P L J L Y H R E A I W B J U X N C Y H Q Y **C** H U
O X E X W J **U** V X D M L E T R A E G V F B N X **N** E I W N Z X A C E I E
N C R L E D U L R X W D T B A J S W C A O G **Q** M U I Y R Y F Q R **N** A N
U P M K T I U E A M K U H I B E M S C H L G B N A C D V Q V A E I Y **C**
C U B **S** G U M B M I A S A **Q** H O T I I S Y B I A T Y Z Z X V **C** E I Q Y
P K I O E Y H O Q G I D H M P E U D **G** L U B **Q** N P A H R G R D G L U D
U E H L J **C** F K X S D V A H V E I N O R W L J **U** S H T U E K M O E S I
U I B Z J M I U R E O B E I J W N P D K Q F M G N W Y P P V U H B **C** S
X U I **C** U H I Q P Y G T G R L Z Y I W A T U U **C** Z D E B U T J R A U I
X H D H E U D U B O W **Q** R A E C B C N M B F P D L V A U I F Q A N M B
R X G **B** H N Q A I E R T V U N L E W Q I W Y M E I A O R S C V E K U I
O U U W A B I S D W K B V E G R A T X O E C C I D N S N I K D F Z L B
S R B E G B I I J O E T **U** P K A L I T X K B A S I D C S Z E Y D W A U
E V N **N** P **H** C S L I R Q U G D T B N I M M L V U L Z A P W S S R H I I
W X **U** X T Y I H N E E A X R A F A G S V E F F A Z D K I M I V S J I I
L S S L P I L **I** A B P O Y G S S N L L **B** E P A V L K V U A B D K M V Q
D G M H I Q M S **F** B T O G W M V G B U Z X E S P X N W S F L N I A E N
N N A I T P L U L A I I I L X X E L G T H W B Y G I Z N Q K P L H P C
N D C A Z X T F U Y S T S **N** R O S Z I L Q L I E L A W Q G N X E F E V
C G Y Q I W C V P O X N W P I S M A X H X **F** B E Q U E N C Y F C R B E
N R C M S Z W Q Q Y N M C Y Z K V D F G X P H X K **U** Y C F O I I K C D
A R A H **B** E L A T I I V E F R E Q U E N C Y D A E T Q E K J C H N L E W
Z H C N E H P Q M D J S Z D Q W F E Z U B C Q W K Z O N H U D A I N Y
L O W E R B B Q U N D A B Y T F H M L W L U P Z A T N V G **C** I R K G I C
Z I B J P M K I **C** U M U L A I I V E E F B E Q U E N C Y Q E Y U J M S J
U C Z L L P F P X C T I V Y I H A O X E X U B G E O G F G L U N B O U
W **S** I M P L E E B E Q U E N C Y D I S I B I B U I I Q N H W U S A C U
M L W Y U Z N N K Z D H G U Z K J Z B A H X U X R I J Y U W Q G E P X
R A Y D K I U O N D S Y V F E J I D A G C Q W P N H I W L X U J W Q A
U U J L Z P X J P B P I B D H W N A B **P** R O P O R I I Q N D F Q Q F Y

Chapter 2

1 RELATIVE

2 PROPORTION

3 FURTHER

4 BAR chart

5 FREQUENCY

6 PENNANT

7 UTILITY

8 OIGV

9 CUMULATIVE

10 INTERVENTION

11 HISTORICAL

12 GRAMPED

13 INTENSE

14 SECT

15 UNGROUPED DATA

16 PIE CHART

17 CUMULATIVE FREQUENCY

18 PERCENTILE RANK

Chapter 2: Summarizing Data: Frequency Distributions in Tables and Graphs

Chapter Outline

- 2.1 Why Summarize Data?
 - 2.2 Frequency Distributions for Grouped Data
 - 2.3 Identifying Percentile Points and Percentile Ranks
 - 2.4 SPSS in Focus: Frequency Distributions for Quantitative Data
 - 2.5 Frequency Distributions for Ungrouped Data
 - 2.6 Research in Focus: Summarizing Demographic Information
 - 2.7 SPSS in Focus: Frequency Distributions for Categorical Data
 - 2.8 Pictorial Frequency Distributions
 - 2.9 Graphing Distributions: Continuous Data
 - 2.10 Graphing Distributions: Discrete and Categorical Data
 - 2.11 Research in Focus: Frequencies and Percents
 - 2.12 SPSS in Focus: Histograms, Bar Charts, and Pie Charts
- Chapter Summary Organized by Learning Objectives

Key Terms

End-of-Chapter Problems

- Factual Problems
- Concepts and Application Problems
- Problems in Research

Learning Objectives (Chapter 2)

After reading this chapter, you should be able to:

1. Construct a simple frequency distribution for grouped and ungrouped data.
2. Determine whether data should be grouped or ungrouped.
3. Identify when it is appropriate to distribute the cumulative frequency, relative frequency, relative percent, cumulative relative frequency, and cumulative percent.
4. Identify percentile points and percentile ranks in a cumulative percent distribution.
5. Construct and interpret graphs for distributions of continuous data.
6. Construct and interpret graphs for distributions of discrete data.
7. Construct frequency distributions for quantitative and categorical data using SPSS.
8. Construct histograms, bar charts, and pie charts using SPSS.

Lecture Suggestions (in Support of the Learning Objectives)

Learning Objectives 1–2 Suggestions. Sections 2.1, 2.2, 2.4, and 2.5 are a great reference for these learning objectives. Students often need to see why concepts are needed. It is useful to begin by showing them how summarizing data graphically can make patterns in data clearer. The example in Section 2.1 is a good one for explaining why researchers summarize data graphically and in tables. The construction of a simple frequency distribution is summarized in three steps. You should use these steps in your classes. The example in the Table 2.2 intentionally includes an outlier so you can easily illustrate a simple frequency distribution and discuss boundaries, intervals, and outliers.

In support of Learning Objective 2, the first 10 questions in the **Summarizing Frequency Distributions Exercise** give students situations in which they must decide whether data should be grouped or ungrouped.

Learning Objective 3 Suggestions. Sections 2.2, 2.3, and 2.4 are great references for meeting this learning objective. Learning Objective 3 builds on the previous learning objective in that students must decide how to summarize frequency data. The example in the book illustrates the different ways that students will see frequency distributions summarized in research articles. This section also explains why and when these different distributions are used (a decision-focused discussion).

The last ten questions of the **Summarizing Frequency Distributions Exercise** are included to support this learning objective. It is a great resource to work through with students or to assign as homework. It will help students see different examples in which they make decisions pertaining to summarizing grouped and ungrouped data. You should also consider including Section 2.6 (Research in Focus) in your classroom discussions. This section gives students a context for how frequency distributions for grouped and ungrouped data are used to summarize demographic information in published articles. This is a simple read that helps them see how frequency distributions can make a lot of information easily and quickly accessible to the reader.

Learning Objective 4 Suggestions. Section 2.3 is a great reference for meeting this learning objective. An example is provided and gives students a step-by-step approach for finding the percentile point in a percentile rank in a frequency distribution. Again, I suggest using the problems and examples in this chapter during class. I have found this sort of participant modeling in class to be helpful to students of all learning styles. Students often have questions as they read. If you work through the examples in their readings, you can essentially help them answer their own questions.

Learning Objectives 5 – 6 Suggestions. Section 2.9 and 2.10 are great references for meeting this learning objective. Each heading works through an example and gives students a step-by-step approach for constructing the graphs. It will be useful to work through the same examples worked through in the book. But it is best to cover material in your comfort zone, so this is just a suggestion. As part of this talk, you may want to read and discuss the research described in Section 2.11. This section brings Learning Objectives 4, 5, and 6 together and helps students recognize that “not all graphs are created equally,” so to speak.

Learning Objectives 7 – 8 Suggestions. These learning objectives are taught in Sections 2.4, 2.7, and 2.12. Refer to the templates for SPSS given for this chapter. These templates are designed to complement any lab assignment you want to give (even one not from the book) for constructing frequency distributions and graphs using SPSS.

Additional suggestion. Please refer to the SPSS template for histograms, bar charts, and pie charts. The last statement in that template tells students “In this example, you can also display the frequency table with the graph by keeping the option to display frequency tables selected. In this way, SPSS gives you many options for summarizing data using tables and graphs.” You might consider asking students the following: “For your own reference, state which display [histogram, bar chart, or pie chart] is easiest for you to read. Please pick only one. There is no right or wrong answer here. It is simply worth recognizing the type of display that makes most sense to you.”

In my classes, I record the responses to this question, distribute them in a frequency distribution for categorical data, and then create a bar chart for the same data. When I show students the results in class, this often leads to interesting conversations and opinions with regard to the “best” way to display data. So this little exercise can reinforce previous lectures, as well as gauge student interest. This is something to consider for your classes if you find the time. This exercise requires about 10 to 15 minutes of class time (sometimes more if class participation is high).

Summarizing Frequency Distributions Exercise

State whether each of the following research examples is best summarized as grouped or ungrouped data. Explain your answer.

1. The time (in seconds) it takes 100 children to complete a cognitive skills game.
2. The number of single mothers with 1, 2, 3, or 4 children.
3. The number of teenagers who have experimented with smoking (yes, no).
4. The age (in years) of freshman students in a local college.
5. The handedness (right- or left-handed) of gifted children.
6. The number of symptoms of stress (ranging between 0 and 12 symptoms) experienced by 180 war veterans.
7. The number of calories in school lunches in a sample of 32 local middle schools.
8. The number of hours of sleep (per night) in a sample of 60 patients being treated for depression.
9. The marital status (single, married, divorced) in a sample of 96 individuals reporting high levels of life satisfaction.
10. The number of traffic violations ticked during a three-month period in one of four high-crime communities.

State whether a cumulative frequency, relative frequency, relative percent, cumulative relative frequency, or cumulative percent is most appropriate for describing the following situations. For cumulative distributions, indicate whether these should be summarized from the top down or from the bottom up.

11. The frequency of businesses with *at least* 20 employees.
12. The frequency of college students with *less than* a 3.0 GPA.
13. The percentage of women completing 1, 2, 3, or 4 tasks simultaneously.
14. The proportion of pregnancies performed in public or private hospitals.
15. The percentage of alcoholics with *more than* two years of substance abuse.
16. The proportion of Americans earning \$30,000 *at most*.
17. The frequency of hospital visits (per year) in a sample of diabetics.
18. The proportion of elderly patients consuming *at or above* 1,400 calories per day.
19. The percentage of athletes training *at or below* 6 hours per week.
20. The percentage of men in one of six physically demanding occupations.

Answers to the Summarizing Frequency Distributions Exercise

1. Grouped data. The time it takes to complete a cognitive skills game would be grouped into class intervals; the frequency of children would be distributed in each interval.
2. Ungrouped data. Single mothers with 1, 2, 3, or 4 children would be listed in classes; the frequency of mothers would be distributed in each class.
3. Ungrouped data. Experimenting with smoking (yes, no) would be listed in classes; the frequency of teenagers would be distributed in each class.
4. Grouped data. The age of freshman students in a local college would be grouped into class intervals; the frequency of freshmen would be distributed in each interval.
5. Ungrouped data. Handedness (right- or left-handed) would be listed in classes; the frequency of gifted children would be distributed in each class.
6. Grouped data. The number of symptoms of stress would be grouped into class intervals; the frequency of war veterans would be distributed in each interval.
7. Grouped data. The number of calories in school lunches would be grouped into class intervals; the frequency of schools would be distributed in each interval.
8. Grouped data. The number of hours of sleep (per night) would be grouped into class intervals; the frequency of patients would be distributed in each interval.
9. Ungrouped data. Marital status (single, married, divorced) would be listed in classes; the frequency of individuals would be distributed in each class.

10. Ungrouped data. The names of the four high-crime communities would be listed in classes; the number of traffic violations ticked would be distributed in each class.
11. Cumulative frequency (from the top down).
12. Cumulative frequency (from the bottom up).
13. Relative percent.
14. Relative frequency.
15. Cumulative percent (top-down).
16. Cumulative relative frequency (bottom-up).
17. Relative frequency.
18. Cumulative relative frequency (top-down).
19. Cumulative percent (bottom-up).
20. Relative percent.

Draft Only

Essential
STATISTICS
for the
**BEHAVIORAL
SCIENCES**

Gregory J. Privitera





Chapter 2

Summarizing Data Tables, Graphs, and Distributions





Chapter Outline

- Frequency and Frequency Distribution
- Simple Frequency Distribution
- Frequency Distribution for Grouped Data
- Steps to Summarize Grouped Data
- Cumulative Frequency
- Relative Frequency
- Relative Percent
- Cumulative Relative Frequency and Cumulative Percent
- Percentile Points and Ranks
- Frequency Distribution for Ungrouped Data
- Graphing Distributions: Continuous Data
- Graphing Distributions: Discrete and Categorical Data





Frequency and Frequency Distribution

- Frequency – describes the number of times or how often a category, score, or range of scores occurs
- Frequency distribution – a summary display for a distribution of data





Simple Frequency Distribution

- Simple frequency distribution – summary display for:
 - The frequency of scores falling within defined groups or intervals (grouped data) in a distribution
 - Generally more clear
 - The frequency of each individual score or category (ungrouped data) in a distribution





Frequency Distributions for Grouped Data

- Grouped data – set of scores distributed into intervals, where the frequency of each score can fall into any one interval
- Interval – discrete range of values within which the frequency of a subset of scores is contained





Steps to Summarize Grouped Data

- Step 1: Find the real range
 - The real range is one more than the difference between the largest and smallest value in a list of data
- Step 2: Find the interval width
 - The interval width is the range of scores in each interval
 - Divide real range by number of intervals chosen
 - Round quotient to nearest whole number
- Step 3: Construct the frequency distribution
 - Same number of intervals as Step 2





Steps to Summarize Grouped Data

- Step 1: Find the real range
 - The range is
 - $175 - 0 = 175$.
 - The real range is
 - $175 + 1 = 176$

TABLE 2.1

The Average Time (in minutes) That 50 Healthy American Children Watched Television per Day in the Previous Year

30	70	7	47	13
60	0	91	33	44
40	9	67	55	65
12	140	77	49	77
110	98	21	22	44
33	44	18	10	33
30	20	110	109	54
17	40	102	33	17
55	16	90	12	175
44	33	33	7	82





Steps to Summarize Grouped Data (cont.)

- Step 2: Find the interval width
 - Number of intervals is 10
 - Choose between 5 and 20 intervals
 - Interval width is real range divided by the number of intervals: $176/10 = 17.6$
 - Round to 18
- Step 3: Construct the frequency distribution





Steps to Summarize Grouped Data (cont.)

- Rules for a simple frequency distribution:
 - Each interval is defined
 - Each interval is equidistant
 - No interval overlaps
 - All values are rounded to same degree of accuracy measured in original data
- Check:
 - Total counts in distribution equals total counts made





Steps to Summarize Grouped Data (cont.)

TABLE 2.2 Simple Frequency Distribution

Intervals	$f(x)$
162–179	1
144–161	0
126–143	1
108–125	3
90–107	4
72–89	3
54–71	7
36–53	8
18–35	12
0–17	11
Total	50

The lower boundary is 0, and the upper boundary is 17 for this interval. The interval width is 18 for all intervals.

The number (or frequency) of values contained in each interval

The total number of values measured in the data set. This equals the sum of the frequencies listed in the $f(x)$ column.

A simple frequency distribution for the average time in minutes that 50 healthy American children watched television per day in the previous year. In this table, $f(x)$ denotes the column heading for the frequency (f) of scores (x) in each interval.





Cumulative Frequency

- “Bottom up”
 - Add frequencies beginning from bottom and working up
 - Top frequency equals total number of measures recorded

TABLE 2.5

A Cumulative Frequency Distribution Table With Calculations Shown in the Center Column

Intervals	Frequency, $f(x)$	Calculation →	Cumulative Frequency (Bottom Up)
108–116	2	$3 + 3 + 5 + 7 + 9 + 11 + 5 + 2$	45
99–107	5	$3 + 3 + 5 + 7 + 9 + 11 + 5$	43
90–98	11	$3 + 3 + 5 + 7 + 9 + 11$	38
81–89	9	$3 + 3 + 5 + 7 + 9$	27
72–80	7	$3 + 3 + 5 + 7$	18
63–71	5	$3 + 3 + 5$	11
54–62	3	$3 + 3$	6
45–53	3	3	3
$N = 45$			





Relative Frequency

- Distributes the proportion of scores in each interval
 - Equals the frequency in an interval divided by the total frequency count
 - Often used to summarize large data sets

TABLE 2.6 The Relative Frequency of Scores in Each Interval (third column)

Intervals	Frequency, $f(x)$	Relative Frequency	Relative Percent
108–116	2	.04	4%
99–107	5	.11	11%
90–98	11	.24	24%
81–89	9	.20	20%
72–80	7	.16	16%
63–71	5	.11	11%
54–62	3	.07	7%
45–53	3	.07	7%
	$N = 45$	Total Rel. Freq. = 1.00	Total Rel. Percent = 100%

The calculation for each relative frequency is given in the text.





Relative Percent

- Distributes the percent of scores in each interval
 - Multiple each relative frequency times 100
 - The sum of relative percents equals 100%

TABLE 2.6 The Relative Frequency of Scores in Each Interval (third column)

Intervals	Frequency, $f(x)$	Relative Frequency	Relative Percent
108–116	2	.04	4%
99–107	5	.11	11%
90–98	11	.24	24%
81–89	9	.20	20%
72–80	7	.16	16%
63–71	5	.11	11%
54–62	3	.07	7%
45–53	3	.07	7%
	$N = 45$	Total Rel. Freq. = 1.00	Total Rel. Percent = 100%

The relative percent of scores in each interval is given in the last column.





Cumulative Relative Frequency

- Distributes the sum of relative frequencies across a series of intervals
 - Can be summarized from bottom up or top down
 - The total sum of relative frequencies is equal to 1.0

TABLE 2.7 A Cumulative Relative Frequency Distribution Table With Calculations Shown in the Fourth Column

Intervals	Frequency, $f(x)$	Relative Frequency	Calculation \rightarrow	Cumulative Relative Frequency (Bottom Up)
108–116	2	.04	.07 + .07 + .11 + .16 + .20 + .24 + .11 + .04	1.00
99–107	5	.11	.07 + .07 + .11 + .16 + .20 + .24 + .11	.96
90–98	11	.24	.07 + .07 + .11 + .16 + .20 + .24	.85
81–89	9	.20	.07 + .07 + .11 + .16 + .20	.61
72–80	7	.16	.07 + .07 + .11 + .16	.41
63–71	5	.11	.07 + .07 + .11	.25
54–62	3	.07	.07 + .07	.14
45–53	3	.07	.07	.07
$N = 45$				

A bottom-up cumulative relative frequency table with calculations shown in column four.





Cumulative Percent

- Distributes the sum of relative percents across a series of intervals
 - Presented from bottom up; also called a percentile rank
 - Total cumulative percent equal to 100%

TABLE 2.8 A Cumulative Percentage of Scores Adding From the Bottom Up

Intervals	Frequency, $f(x)$	Relative Percent	Cumulative Percent (Bottom Up)
108–116	2	4%	100%
99–107	5	11%	96%
90–98	11	24%	85%
81–89	9	20%	61%
72–80	7	16%	41%
63–71	5	11%	25%
54–62	3	7%	14%
45–53	3	7%	7%
$N = 45$		Total Rel. Percent = 100%	

A cumulative percent of scores from bottom up (shaded); also called percentile ranks.





Percentile Points and Ranks

- Identify individual rank by converting a frequency distribution to a cumulative percent distribution
 - Percentile point – value of a score on a scale below which a specified percentage of scores in a distribution fall
 - Percentile rank – percentage of scores with values that fall below a specified score in a distribution





Percentile Points and Ranks

- Finding Percentiles
 - Step 1: Identify the interval
 - Step 2: Identify the real range for the interval
 - Real limits: 0.5 less than lower limit; 0.5 greater than upper limit
 - Real range one point greater than observed range
 - Step 3: Find the position of the percentile point within the interval
 - Distance of percentile from top of the interval
 - Divide distance from top by total range width of percentages
 - Multiply fraction by width of real range
 - Step 4: Identify percentile point
 - Subtract position of percentile point from top of the real interval





Percentile Points and Ranks

TABLE 2.9

The Cumulative Percentage of Scores for the Business Safety Data

Intervals	Frequency, $f(x)$	Cumulative Percent (Bottom Up)
108–116	2	100%
99–107	5	96%
90–98	11	85% ← The 75th percentile falls at this interval
81–89	9	61%
72–80	7	41%
63–71	5	25%
54–62	3	14%
45–53	3	7%
$N = 45$		





SPSS and Percentiles

- Enter name of measure into **Variable View** tab
- Enter values into **Data View** tab
- Select *Descriptive Statistics and Frequencies* under **Analyze** option (menu bar)
- In dialog box, select variable to move into “Variable(s):” box
- Select OK, or Paste and click Run





Frequency Distributions for Ungrouped Data

- Ungrouped data – a set of scores or categories distributed individually, where the frequency for each individual score or category is counted
 - Ungrouped when number of different scores is small, and for qualitative or categorical variables
 - To distribute, skip to final step for constructing a frequency distribution
 - Intervals not constructed





Examples With Ungrouped Data

0	2	1	0
0	2	1	0
2	3	2	2
3	3	2	3
1	4	3	2
2	1	2	0
3	2	2	1
0	3	3	2
2	2	1	0
2	1	0	1

Number of Naps	$f(x)$
0	8
1	8
2	15
3	8
4	1
	$N = 40$

A list of the number of naps that children younger than age 3 take per day (left side), and the frequency distribution for these same data (right side).





Graphing Distributions: Continuous Data

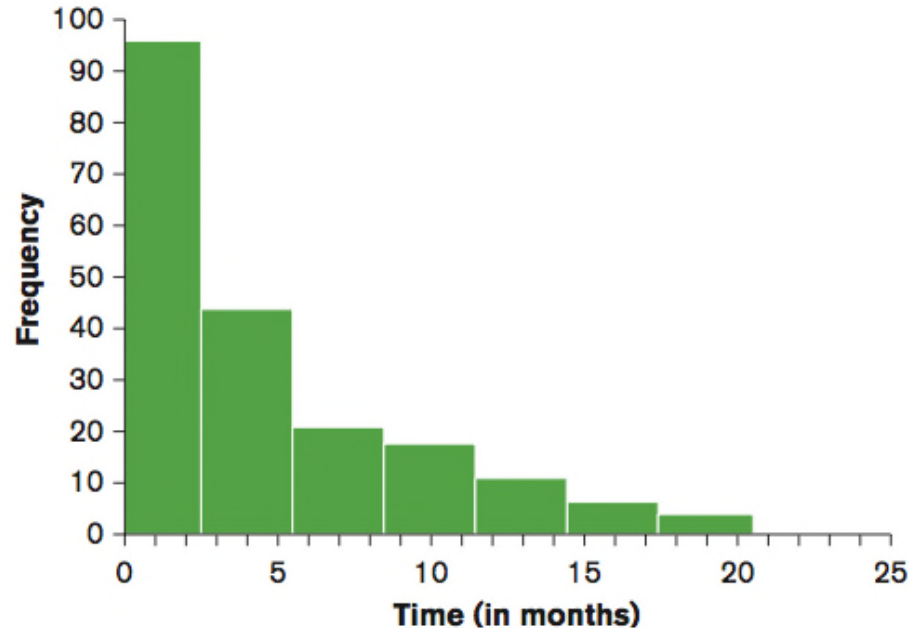
- Histograms –summarizes the frequency of continuous data that are grouped
- To construct, follow 3 rules:
 - Rule 1: Vertical rectangle represents each interval, and height of the rectangle equals the frequency recorded for each interval
 - Rule 2: Base of each rectangle begins and ends at upper and lower boundaries of each interval
 - Rule 3: Each rectangle touches adjacent rectangles at the boundaries of each interval





The Histogram

Intervals (in months)	$f(x)$
18-20	4
15-17	6
12-14	11
9-11	18
6-8	21
3-5	44
0-2	96



A frequency table (left) and histogram (right) summarizing the frequency distribution for the time (in months) that it took a sample of 200 college graduates to find employment.





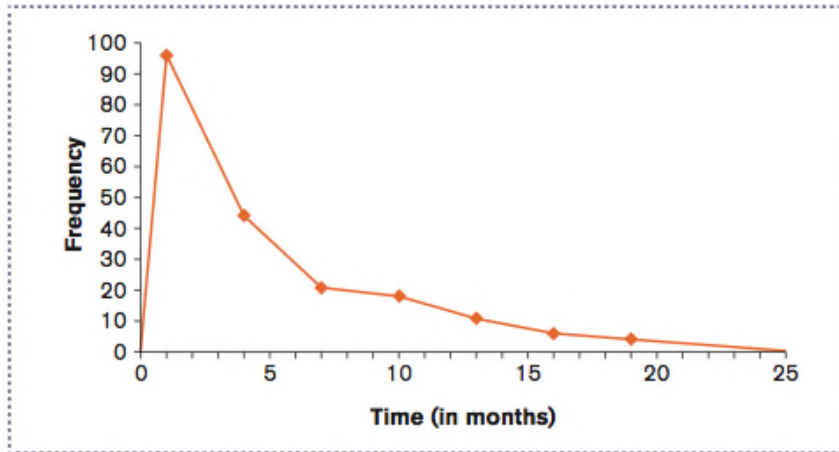
Graphing Distributions: Continuous Data (cont.)

- Frequency polygons – summarizes the frequency of continuous data at the midpoint of each interval (dot-and-line)
 - Midpoint is calculated by adding upper and lower boundary of interval, then dividing by 2
- Ogive – summarizes the cumulative percent of continuous data at the upper boundary of each interval (dot-and-line)

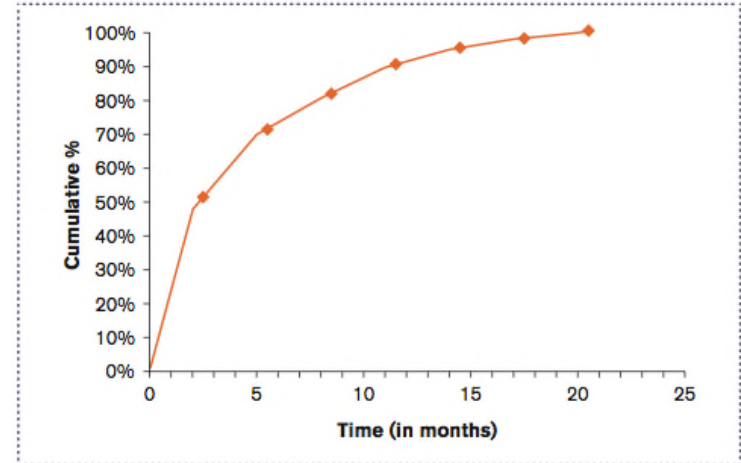




The Frequency Polygon and Ogive



A frequency polygon summarizing the frequency distribution for the time (in months) that it took a sample of 200 college graduates to find employment.



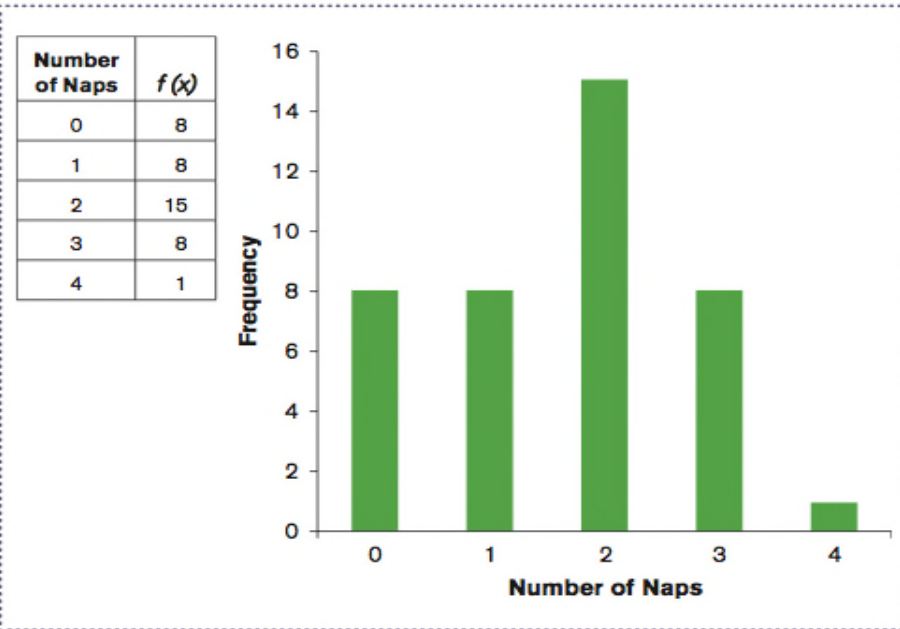
An ogive summarizing the cumulative percent distribution for the time (in months) that it took a sample of 200 college graduates to find employment.





Graphing Distributions: Discrete and Categorical Data

- Bar chart – summarizes the frequency of discrete and categorical data in whole units or categories
 - Each category is represented by a rectangle
 - Rectangles do not touch along the x-axis



A frequency table (left) and a bar chart (right) summarizing the average number of naps per day that mothers give their children, who are younger than age 3.





Graphing Distributions: Discrete and Categorical Data (cont.)

- Pie chart – summarizes the relative percent of discrete and categorical data into sectors
 - Sector – represents the relative percent of a particular category

A Pie Chart for the Distribution of Educational Attainment of the Population 25 Years or Older in the United States, 2012

